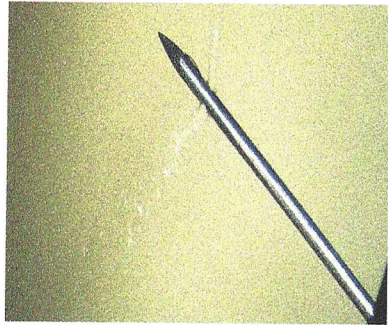


ELDOR DOUBLE HOLE PENCIL POINT DISTRIBUTED BY FOCUSED  
MEDICAL TECHNOLOGIES, LLC



# ELDOR DOUBLE HOLE PENCIL POINT



The only spinal needle with double lateral holes

Minimizes the complication in Spinal Anesthesia

Reduces Post Dural Puncture Headache (PDPH)

Faster distribution of the anesthetic agent

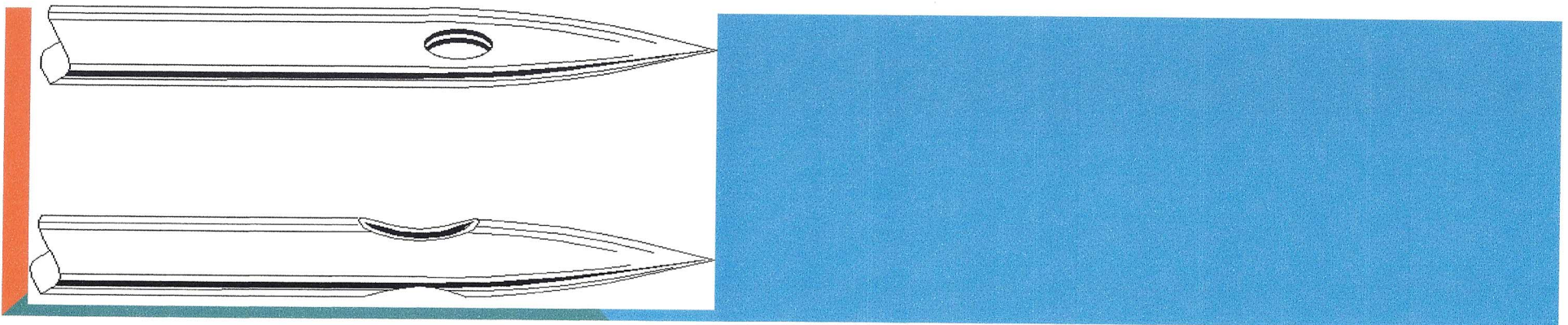
3.5 times better CSF Backflow than the Pencan Spinal Needle



**PRODUCTS**

**(ALL NEEDLES ARE WITH OR WITH MARKINGS)**

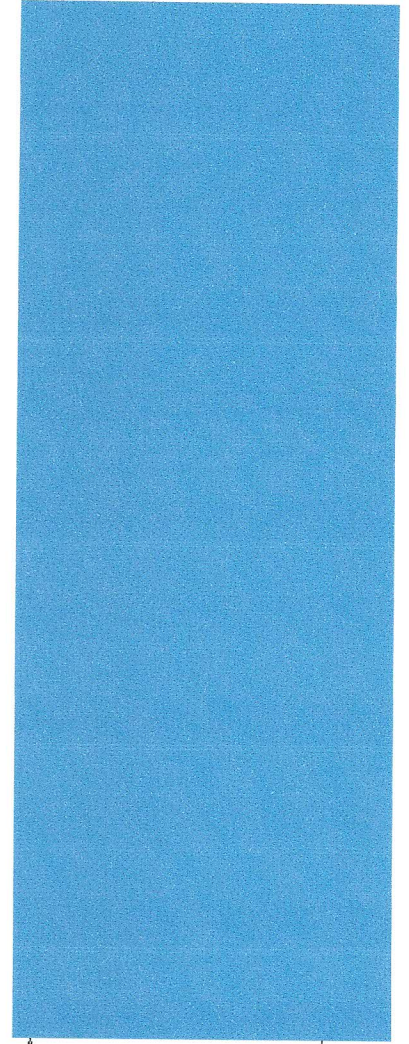
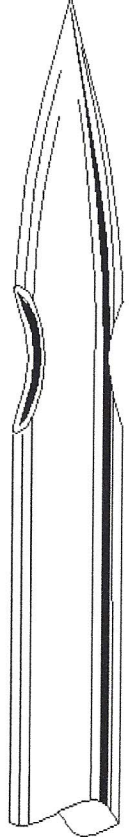
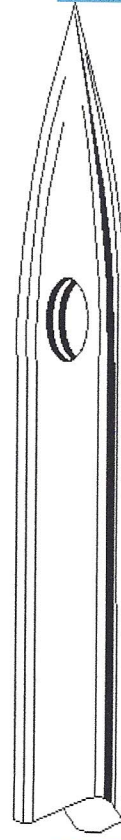
Models	Descriptions	Gauge (G)	Length (mm)
CSEN 196	Sharp tip with introducer, packed and sterilized	25	103
CSEN 196.1	Sharp tip with introducer, packed and sterilized	24	103
CSEN 196.2	Sharp tip with introducer, packed and sterilized	22	103
CSEN 196.3	Sharp tip with introducer, packed and sterilized	20	103





**PRODUCTS  
( WITH MARKING 10MM FROM TIP)**

Models	Descriptions	Gauge (G)	Length (mm)
CSEN 204	Sharp tip with introducer, packed and sterilized	25	103
CSEN 204.4	Sharp tip with introducer, packed and sterilized	24	103
CSEN 204.1	Sharp tip with introducer, packed and sterilized	22	103
CSEN 204.5	Sharp tip with introducer, packed and sterilized	20	103





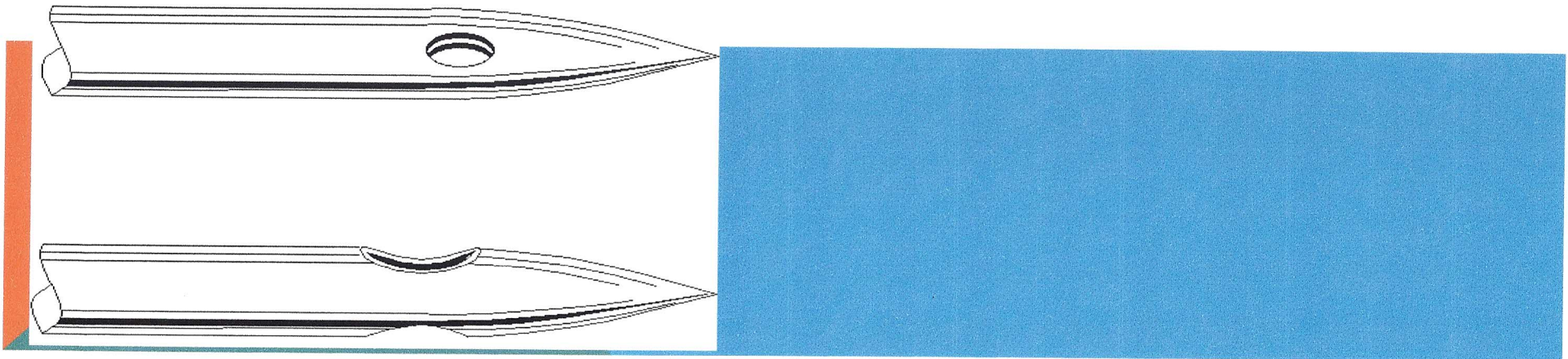
**PRODUCTS**  
**( NEEDLES WITH OR WITHOUT MARKINGS)**

Models	Descriptions	Gauge (G)	Length (mm)
CSEN 2.1	Sharp tip with introducer	25	125
CSEN 2.2	Sharp tip with introducer	24	125
CSEN 2.3	Sharp tip with introducer	22	125
CSEN 2.4	Sharp tip with introducer	20	125
CSEN 2.5	<i>Sharp tip with introducer, marking 10mm from tip</i>	25	125
CSEN 2.6	<i>Sharp tip with introducer, marking 10mm from tip</i>	24	125
CSEN 2.7	<i>Sharp tip with introducer, marking 10mm from tip</i>	22	125
CSEN 2.8	<i>Sharp tip with introducer, marking 10mm from tip</i>	20	125

**PRODUCTS**

**(ALL NEEDLES ARE WITH OR WITHOUT MARKINGS)**

Models	Descriptions	Gauge (G)	Length (mm)
CSEN 36	Sharp tip with introducer, packed and sterilized	25	250
CSEN 36.1	Sharp tip with introducer, packed and sterilized	24	200
CSEN 36.2	Sharp tip with introducer, packed and sterilized	22	150

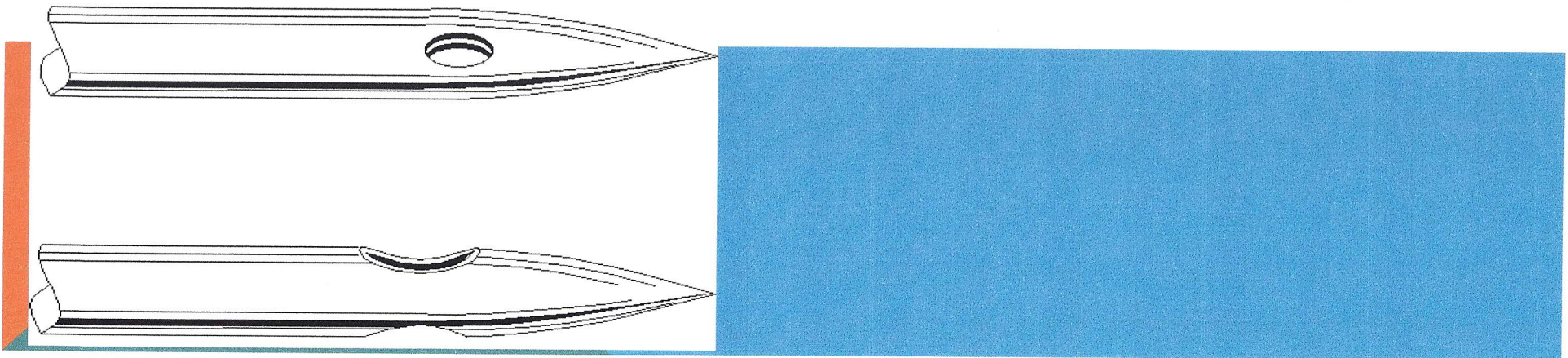




**PRODUCTS**

**( WITH MARKING 10MM FROM TIP)**

Models	Descriptions	Gauge (G)	Length (mm)
CSEN 229	Sharp tip with introducer, packed and sterilized	25	50
CSEN 229.1	Sharp tip with introducer, packed and sterilized	24	50
CSEN 229.2	Sharp tip with introducer, packed and sterilized	22	50
CSEN 229.3	Sharp tip with introducer, packed and sterilized	20	50





## WARNINGS

### DOUBLE-HOLE PENCIL-POINT SPINAL NEEDLE (ELDOR SPINAL NEEDLE)

#### Eldor spinal needle technique

This is an innovative device in which there are two round opposing holes at the tip. The anesthetic solution will flow out of these two holes into the subarachnoid space at the direction of these two holes. The Eldor spinal needle separates Dural fibers rather than cutting them to reduce incidence of spinal headache. A small bore Eldor spinal Needle is inserted through an introducer until it pierces the Dural. Confirmation of its placement in the subarachnoid space is when CSF is obtained through the hub of the spinal needle. The local anesthetic solution is then injected through the spinal needle into the subarachnoid space. After the injection is completed the spinal needle is withdrawn and the patient is positioned as required.

#### Local anesthetic injections

The local anesthetic solution injected into the subarachnoid space is exited through the two opposing holes positioned at the pencil point tip. The injection should be slow and gentle. The dose should be adjusted to every patient and to every operation. The orientation of the double holes is a factor for the administration of the anesthetic solution.

#### Hazards

After confirmation of the

Eldor spinal needle's position in the subarachnoid space, secure the needle during local anesthetic solution injection from forward or backward movements. Forward movement may cause paresthesias by the pencil point's tip touching a nerve root, while a backward movement may withdraw the Eldor spinal needle or its orifices from the subarachnoid space into the epidural space, resulting in partial spinal anesthesia.

NOTE: The key on the spinal needle hub indicates the direction of one of the distal spinal needle ports. The second port parallels that on the side of the key. Inject the desired dose of intrathecal medication at a rate, level and direction consistent with the desired spread of anesthesia or analgesia through both ports.

Follow national and/or institutional guidelines for patient monitoring appropriate to the administration of spinal anesthetics.

#### Caution

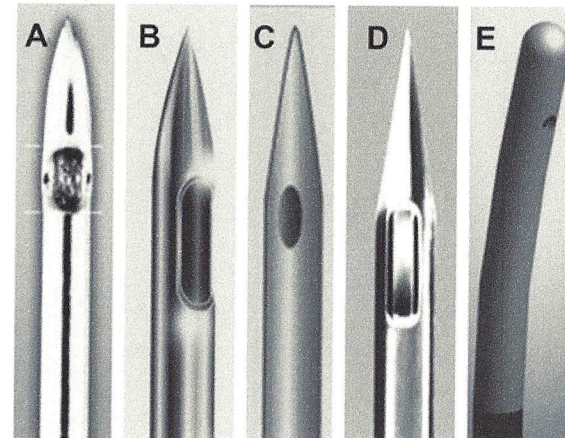
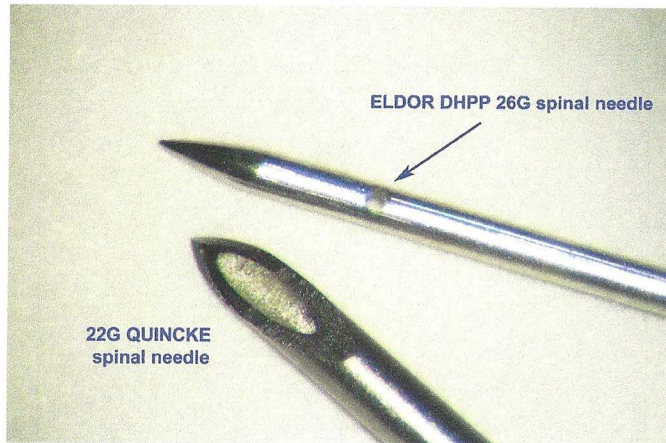
Federal law restricts this device to sale by, or on the order of a physician.



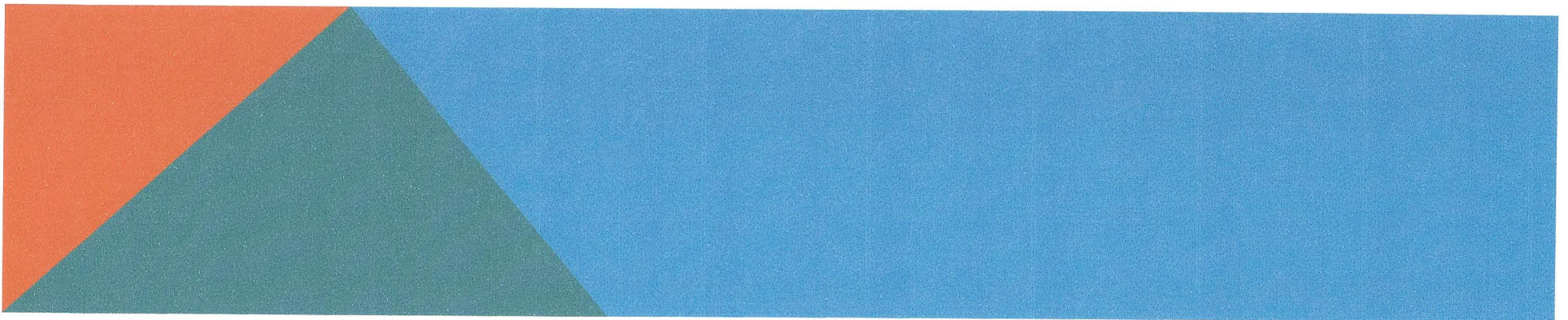
# NEEDLES COMPARISON

ELDOR VS. QUINCKE

ELDOR DHPP SPINAL NEEDLE HAS TWO EVENLY OPPOSITE HOLES FOR BETTER DISTRIBUTION (C)



(A) Gertie Marx ®, (B) Sprotte ® , (C) Eldor, (D) Whitacre, (E) Epimed





# REFERENCE LIST

- Yamazaki, O., Hukuyama, A., et al (1999). Study of Penetration Characteristics of Pencil Point type spinal anesthesia needles. *J. Anesthesia*; 13:304
- Yamazaki, O. , et al (1999). Comparative Study on Puncture resistance of spinal anesthesia needles. *Jpn J Clin Mon*; 10:67
- Puolakka, R., et al (1998). Comparison of double hole and single hole pencil point needles for spinal anesthesia with hyperbaric bupivacaine. *Reg Anesth Pain Med*. 23:271-277

